

BIM-based Cultural Heritage Asset Management Tool. Innovative solution to orient the preservation and valorization of historic buildings

Authors: Emanuele PIAIA¹, Federica MAIETTI², Roberto DI GIULIO³, Oana SCHIPPERS-TRIFAN², Andre VAN DELFT²; Sander BRUINENBERG², Rosamaria OLIVADESE²

¹ University of Ferrara, Department of Architecture, (piamni; mttfrc; dgr)@unife.it; ² DEMO Consultants, (oana; andre; sander.bruinenberg; rosamaria)@demobv.nl

Forum topics	<input type="checkbox"/> Energy in 21st Century	<input type="checkbox"/> Cultural Heritage in Digital World
	<input type="checkbox"/> Engineering Capacity Building	<input type="checkbox"/> Disaster Risk Management & Governance for Resilient Communities
	<input type="checkbox"/> Construction 4.0	<input checked="" type="checkbox"/> BIM Lifecycle, Facility & Asset Management

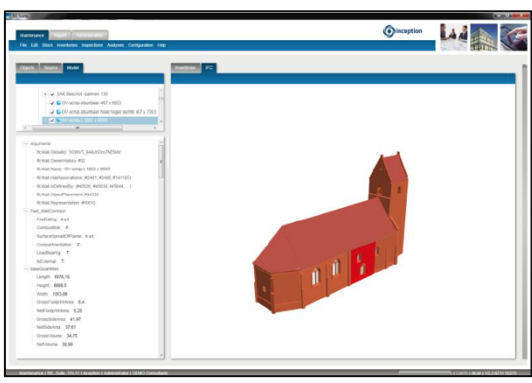
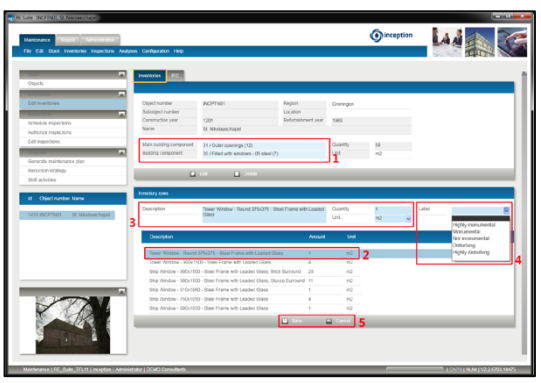
Abstract: (250 to 500 words: for each heading use the bullet points or narrative - the submission including graphics should not exceed one page)

Problems - Issues / Challenges-Needs	Digital technologies are more and more needed to give access to Cultural Heritage (CH) and to allow for their curation and re-use. For this reason it is necessary to increase the knowledge on the CH building stock to support sustainable maintenance, preservation and revitalization strategies through the development of user-friendly asset management tools to support decision making on the interventions needed during the lifetime of the building.
Solutions - Methods / Results - Findings	The H2020 INCEPTION project creates an inclusive understanding of European built CH across different disciplines (ICT, architecture, history, and law), using a set of relevant IT technologies and serving various business sectors and different stakeholders within the CH sector such as technicians, asset managers or owners and local authorities. This paper presents a desktop (off-site) and mobile (on-site) application that equips the stakeholders involved in CH preservation with cost-effective instruments for condition assessment, asset management, rehabilitation and maintenance planning of heritage assets, as well as decision-support on how to maintain the CH stock within constraints on monumentality and resources.
Novelty - Value / Relevance to ...	Within INCEPTION, Asset Management (AM) is regarded mainly within the framework of decision-making for restoration, conservation and maintenance of historic buildings. As such, AM deals with collecting, structuring, analysing and disclosing data related to historic buildings. The CH AM is a Building Information Modelling (BIM) user application for preventive conservation of CH buildings. It supports the required on-site and technical assessment and off-site analysis to determine the actual condition of the historic buildings. As a result, it will enhance the understanding of possible and necessary preventive measures for the historic buildings, including the implications of these measures in relation to technical risks, monument protection regulations, cost management, and socio-functional building performance. Together with the IT technologies developed within INCEPTION, the CH AM tool will facilitate streamlining the conservation and management process of heritage assets.
Forum statement	Preserving Cultural Heritage through to BIM based Asset Management tools.

Keywords: (up to 5 keywords)

Cultural-Heritage; BIM; Condition assessment; Sustainable maintenance; Asset Management

Graphics: (please use the gray area below for *representative graphics* or *graphical summary*: select the gray area below and paste your graphics)



CH AM Tool pictures